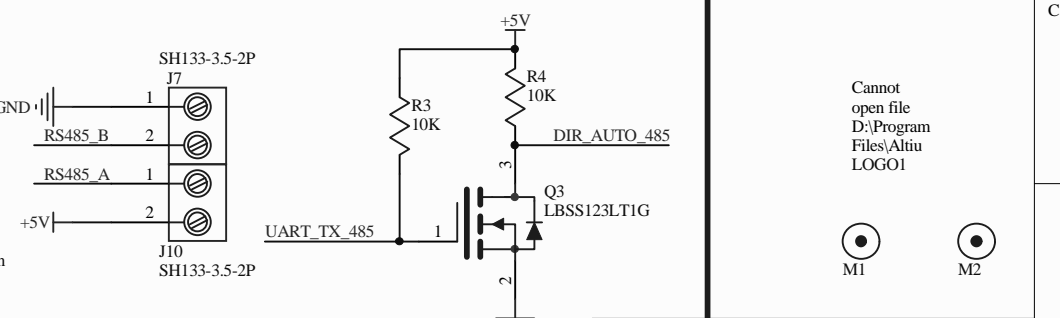
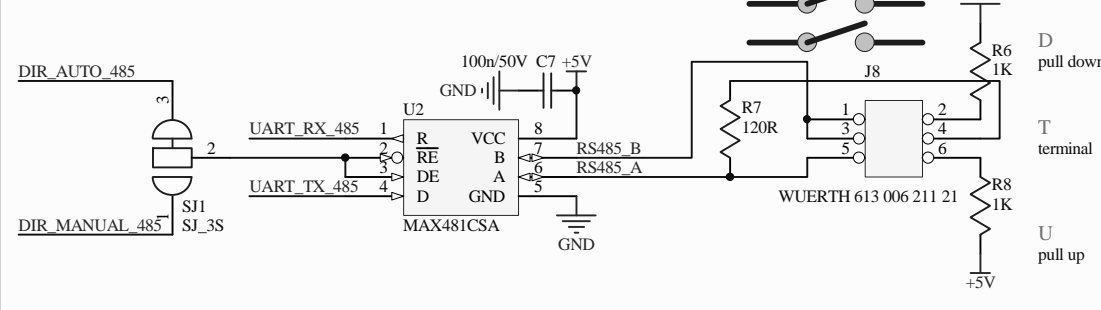


If you set to auto mode, that means you don't need a GPIO pin to control the RS485 data direction. The UART\_TX\_485 with the FET(Q3) will help control the direction, but it's not perfect. In this case, the RS485 bus should be pulled up with resistor, otherwise the high level bit of send byte can't be sent to the RS485 BUS.

If you use the manual mode, this means you need a GPIO pin(D4) to control the RS485 data direction. If all nodes on the RS485 bus are in receiving mode, the bus voltage is zero, the voltage may cause the receiver output zero to the MCU.

You should use the pull-up resistor and one pull-down resistor on the RS485 BUS.

If the bus line is very long, you should use the terminal resistor.



DrawnBy:	HuangChao	Date:	2014/5/5	Cannot open file D:\Program Files\Altium	Tinysine Electronics
Checkedby:	*	Date:		LOGO1	
Approvedby:	*	Date:		MI	
Sheet NO:	1 of 1	Size:	A4	M2	
Document Name:				RS232&RS485 Shield V1r1	
Document NO:				*	